

# SADAF ELECTRIC INDUSTRIES CO.



# COMPRESSION CABLE LUGS



## A COMPLETE PROTECTION

For Every Application and Industry

The Universal Expert  
For Your  
Perfect Electrical  
Infrastructure & Safety

A Member of



[www.seico-sa.com](http://www.seico-sa.com)



**SEICO** is one of the most renowned manufacturers of Electrical & Lightning Protection Systems in the GCC that operates according to international quality management systems, with the necessary international technical certifications for its entire product range.

A cable management system is incomplete without our **Cable Lugs**, connectors, and cable terminations. They are one of the most important product families in the SEICO range of cable management systems. According to high-quality international standards and specifications, they are designed, engineered, developed, and certified.

Our products are used in a wide variety of applications, such as power and water generation, substations and control panels, industrial projects, oil and gas fields, petrochemical, and many more.

We take pride in the trust and satisfaction our esteemed customers have shown us. We have therefore established ourselves as the market leader by providing the highest level of quality products and services in all our segments.



## GENERALINDEX

- 01 SINGLE HOLE COMPRESSION LUGS
- 03 SINGLE HOLE COMPRESSION LUGS
- 05 SINGLE HOLE COMPRESSION LUGS - HEAVY DUTY
- 05 SINGLE HOLE COMPRESSION LUGS - LONG BAREL
- 06 DOUBLE HOLE COMPRESSION LUGS
- 06 FOUR HOLE COMPRESSION LUGS
- 07 COMPRESSION JOINTS - STANDARD BARREL

**Single Hole Compression Lugs -  
With Inspection Hole**

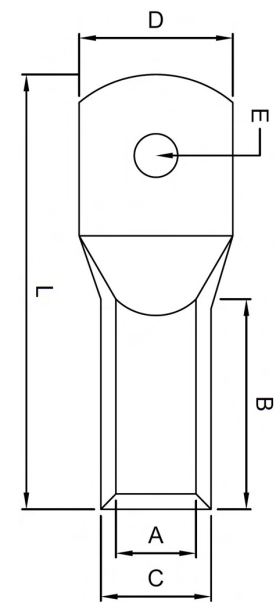
\*Blank Palm & other Hole sizes available on request.

Conforms to BS EN IEC 62561-1

Material: Copper / Tinned Copper

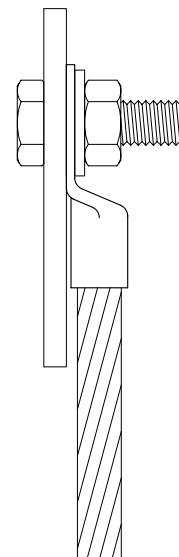
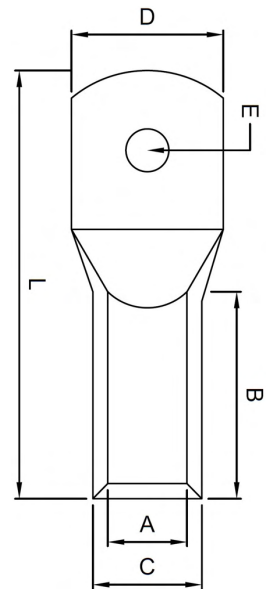


CODE	AREA (mm <sup>2</sup> )	E (mm)	A (mm)	C (mm)	B (mm)	D (mm)	L (mm)
SCLT-2.5-05	2.5	5.2	2.4	4	7	9	20
SCLT-04-06	4	6.5	3.1	4.8	7	11	22
SCLT-06-06	6	6.5	3.8	5.5	9	11	24
SCLT-10-05	10	5.5	4.5	6.2	10	12	28.5
SCLT-10-06	10	6.5	4.5	6.2	10	12	31.5
SCLT-10-08	10	8.5	4.5	6.2	10	15	35
SCLT-16-05	16	5.5	5.4	7.1	13	12	31.5
SCLT-16-06	16	6.5	5.4	7.1	13	12	33.25
SCLT-16-08	16	8.5	5.4	7.1	13	15	37.5
SCLT-25-05	25	5.5	6.8	8.8	15	14	37.5
SCLT-25-06	25	6.5	6.8	8.8	15	14	37.5
SCLT-25-08	25	8.5	6.8	8.8	15	16	42
SCLT-25-10	25	10.5	6.8	8.8	15	18	46
SCLT-35-06	35	6.5	8.2	10.6	17	17	39.5
SCLT-35-08	35	8.5	8.2	10.6	17	17	44
SCLT-35-10	35	10.5	8.2	10.6	17	19	49
SCLT- 50-06	50	6.5	9.5	12.4	19	20	47
SCLT- 50-08	50	8.5	9.5	12.4	19	20	47
SCLT- 50-10	50	10.5	9.5	12.4	19	20	51
SCLT-70-06	70	6.5	11.3	14.6	21	23	53
SCLT-70-08	70	8.5	11.3	14.6	21	23	53
SCLT-70-10	70	10.5	11.3	14.6	21	23	56
SCLT-70-13	70	13	11.3	14.6	21	23	59
SCLT-70-15	70	15	11.3	14.6	21	23	62
SCLT-95-08	95	8.5	13.5	17.4	25	26	60
SCLT-95-10	95	10.5	13.5	17.4	25	26	60
SCLT-95-13	95	13	13.5	17.4	25	26	62
SCLT-95-15	95	15	13.5	17.4	25	26	65.5
SCLT-120-08	120	8.5	15	19.4	26	28	65
SCLT-120-10	120	10.5	15	19.4	26	28	65
SCLT-120-13	120	13	15	19.4	26	28	65
SCLT-120-15	120	15	15	19.4	26	28	67





CODE	AREA (mm <sup>2</sup> )	E (mm)	A (mm)	C (mm)	B (mm)	D (mm)	L (mm)
SCLT-150-08	150	8.5	16.5	21	30	31	70
SCLT-150-10	150	10.5	16.5	21	30	31	70
SCLT-150-13	150	13	16.5	21	30	31	72
SCLT-150-15	150	15	16.5	21	30	31	72
SCLT-150-17	150	17	16.5	21	30	31	74
SCLT-185-10	185	10.5	19	24	30	35	83
SCLT-185-13	185	13	19	24	30	35	83
SCLT-185-15	185	15	19	24	30	35	83
SCLT-185-17	185	17	19	24	30	35	83
SCLT-240-10	240	10.5	21	26	35	39	93.5
SCLT-240-13	240	13	21	26	35	39	93.5
SCLT-240-15	240	15	21	26	35	39	93.5
SCLT-240-17	240	17	21	26	35	39	93.5
SCLT-240-21	240	21	21	26	35	39	93.5
SCLT-300-13	300	13	23.5	29.5	44	43	111
SCLT-300-15	300	15	23.5	29.5	44	43	111
SCLT-300-17	300	17	23.5	29.5	44	43	111
SCLT-300-21	300	21	23.5	29.5	44	43	111
SCLT-400-13	400	13	27	34	44	49	114
SCLT-400-15	400	15	27	34	44	49	114
SCLT-400-17	400	17	27	34	44	49	114
SCLT-400-21	400	21	27	34	44	49	114
SCLT-500-17	500	17	29.5	38.5	44	53	119
SCLT-500-21	500	21	29.5	38.5	44	53	119
SCLT-630-15	630	15	35	45	56	65	144
SCLT-630-16	630	16	35	45	56	65	144
SCLT-630-17	630	17	35	45	56	65	144
SCLT-630-20	630	20	35	45	56	65	144
SCLT-630-21	630	21	35	45	56	65	144



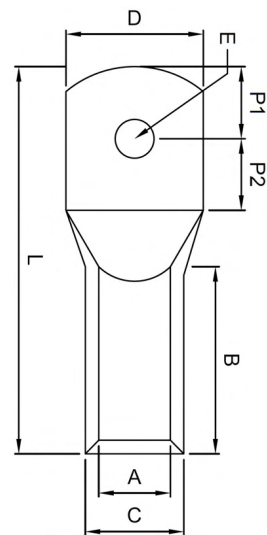


**Single Hole Compression Lugs-  
Without Inspection Hole**

\*Blank Palm & other Hole sizes available on request.

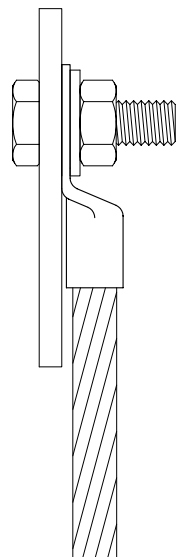
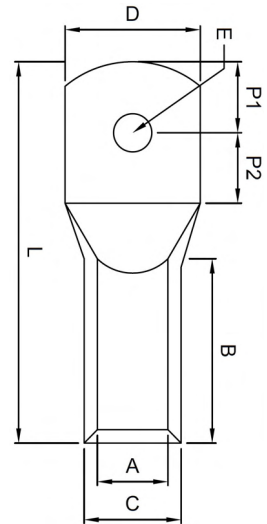
Material: Copper / Tinned Copper

CODE	AREA (mm <sup>2</sup> )	E (mm)	A (mm)	C (mm)	B (mm)	D (mm)	P2(mm)	P1(mm)	L (mm)
SCLD-06-06	6	6.5	3.8	5.5	9	11	6.0	6.0	24.0
SCLD-10-05	10	5.5	4.5	6.2	10	12	7.5	6.5	28.5
SCLD-10-06	10	6.5	4.5	6.2	10	12	7.5	6.5	31.5
SCLD-10-08	10	8.5	4.5	6.2	10	15	10	10	35
SCLD-16-05	16	5.5	5.4	7.1	13	12	6.5	5.5	31.5
SCLD-16-06	16	6.5	5.4	7.1	13	12	7.5	6.25	33.25
SCLD-16-08	16	8.5	5.4	7.1	13	15	9.5	8.5	37.5
SCLD-25-05	25	5.5	6.8	8.8	15	14	7.5	7.5	37.5
SCLD-25-06	25	6.5	6.8	8.8	15	14	7.5	7.5	37.5
SCLD-25-08	25	8.5	6.8	8.8	15	16	10	10	42
SCLD-25-10	25	10.5	6.8	8.8	15	18	12	12	46
SCLD-35-06	35	6.5	8.2	10.6	17	17	8	8	40
SCLD-35-08	35	8.5	8.2	10.6	17	17	10	10	44
SCLD-35-10	35	10.5	8.2	10.6	17	19	12	12	49
SCLD-50-06	50	6.5	9.5	12	19	20	10	10	47
SCLD-50-08	50	8.5	9.5	14	19	20	10	10	47
SCLD-50-10	50	10.5	9.5	14	19	20	12	12	51
SCLD-70-06	70	6.5	11.3	14.6	21	23	10	10	53
SCLD-70-08	70	8.5	11.3	14.6	21	23	10	10	53
SCLD-70-10	70	10.5	11.3	14.6	21	23	12	12	56
SCLD-70-13	70	13	11.3	14.6	21	23	13	13	59
SCLD-70-15	10	15	11.3	14.6	21	23	14	14	62
SCLD-95-08	95	8.5	13.5	17	25	26	12	12	60
SCLD-95-10	95	10.5	13.5	17	25	26	12	12	60
SCLD-95-13	95	13	13.5	17	25	26	13	13	62
SCLD-95-15	95	15	13.5	17	25	26	14.5	14.5	65.5
SCLD-120-08	120	8.5	15	19.4	26	28	14	14	65
SCLD-120-10	120	10.6	15	19.4	26	28	14	14	65
SCLD-120-13	120	13	15	19.4	26	28	14	14	65
SCLD-120-15	120	15	15	19.4	26	28	15	15	67





CODE	AREA (mm <sup>2</sup> )	E (mm)	A (mm)	C (mm)	B (mm)	D (mm)	P2 (mm)	P1 (mm)	L (mm)
SCLD-150-08	150	8.5	16.5	21	30	31	14	14	70
SCLD-150-10	150	10.5	16.5	21	30	31	14	14	70
SCLD-150-13	150	13	16.5	21	30	31	15	15	72
SCLD-150-15	150	15	16.5	21	30	31	15	15	72
SCLD-150-17	150	17	16.5	21	30	31	16	16	74
SCLD-185-10	185	10.5	19	24	30	35	18	18	83
SCLD-185-13	185	13	19	24	30	35	18	18	83
SCLD-185-15	185	15	19	24	30	35	18	18	83
SCLD-185-17	185	17	19	24	30	35	18	18	83
SCLD-240-10	240	10.5	21	26	35	39	19	21.5	93.5
SCLD-240-13	240	13	21	26	35	39	19	21.5	93.5
SCLD-240-15	240	15	21	26	35	39	19	21.5	93.5
SCLD-240-17	240	17	21	26	35	39	19	21.5	93.5
SCLD-240-21	240	21	21	26	35	39	19	21.5	93.5
SCLD-300-13	300	13	23.5	29.5	44	43	24	24	111
SCLD-300-15	300	15	23.5	29.5	44	43	24	24	111
SCLD-300-17	300	17	23.5	29.5	44	43	24	24	111
SCLD-300-21	300	21	23.5	29.5	44	43	24	24	111
SCLD-400-13	400	13	27	34	44	49	24	24	114
SCLD-400-15	400	15	27	34	44	49	24	24	114
SCLD-400-17	400	17	27	34	44	49	24	24	114
SCLD-400-21	400	21	27	34	44	49	24	24	114
SCLD-500-15	500	15	29.5	38.5	44	53	24	24	119
SCLD-500-17	500	17	29.5	38.5	44	53	24	24	119
SCLD-500-21	500	21	29.5	38.5	44	53	24	24	119
SCLD-630-15	630	15	35	45	56	65	33	33	144
SCLD-630-16	630	16	35	45	56	65	33	33	144
SCLD-630-17	630	17	35	45	56	65	33	33	144
SCLD-630-20	630	20	35	45	56	65	33	33	144
SCLD-630-21	630	21	35	45	56	65	33	33	144



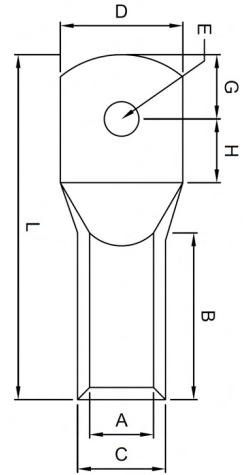


**Single Hole Compression Lugs - Heavy Duty**

\*Blank Palm & other Hole sizes available on request.  
Material: Copper / Tinned Copper

CODE
SCLT-25-08-H
SCLT-35-08-H
SCLT-50-08-H
SCLT-70-10-H
SCLT-95-13-H
SCLT-120-13-H
SCLT-150-13-H
SCLT-185-13-H
SCLT-240-17-H
SCLT-300-17-H
SCLT-400-21-H

AREA (mm <sup>2</sup> )	E (mm)	A (mm)	C (mm)	B (mm)	D (mm)	G (mm)	H (mm)	L (mm)
25	8.5	6.8	10	18	16	10	10	45
35	8.5	8.2	12.5	20	17	10	10	47
50	8.5	9.5	14.5	25	20	10	10	53
70	10.5	11	16	30	23	12	12	65
95	13	13.5	19	37	26	13	13	74
120	13	15	20.5	38	28	14	14	77
150	13	16.5	23	42	31	15	15	84
185	13	17	23.5	45	35	18	18	98
240	17	19.2	25.5	53	39	19	21.5	111.5
300	17	23.5	32	62	43	24	24	129
400	21	27	38	64	49	24	24	134

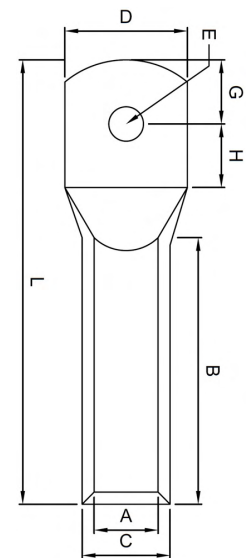


**Single Hole Compression Lugs - Long Barrel**

\*Blank Palm & other Hole sizes available on request.  
Material: Copper / Tinned Copper

CODE
SCLB-06-06
SCLB-10-08
SCLB-16-08
SCLB-25-08
SCLB-35-08
SCLB-50-10
SCLB-70-13
SCLB-95-13
SCLB-120-13
SCLB-150-13
SCLB-185-13
SCLB-240-17
SCLB-300-21
SCLB-400-21
SCLB-500-21
SCLB-630-21

AREA (mm <sup>2</sup> )	E (mm)	A (mm)	C (mm)	L (mm)	B (mm)	D (mm)	H (mm)	G (mm)
6	6.5	3.8	5.5	20	11	11	6	6
10	8.5	4.5	7	26	11	15	10	10
16	8.5	5.5	8.5	31	15	15	9.5	8.5
25	8.5	7	10	32	15	16	10	10
35	8.5	8.5	12	34	17	17	10	10
50	10.5	10	14	40	20	20	12	12
70	13	12	16.5	47	22	23	13	13
95	13	13.5	18	49	25	26	13	13
120	13	15	19.5	52	27	28	14	14
150	13	18.5	21	59	32	31	15	15
185	13	19	24	74	39	35	18	18
240	17	21	26	83	48	39	19	21.5
300	21	23.5	29.5	94	51	43	24	24
400	21	27	34	99	53	49	24	24
500	21	29.5	38.5	109	5a	53	24	24
630	21	35	45	115	60	65	33	33





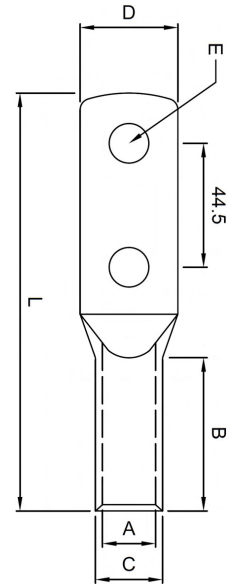
### Double Hole Compression Lugs

\*Blank Palm & other Hole sizes available on request.  
Material: Copper / Tinned Copper



**CODE**

	AREA (mm <sup>2</sup> )	E (mm)	A (mm)	C (mm)	B (mm)	D (mm)	L (mm)
SCL2H-16-10	16	10.5	5.4	7.1	15	15	84
SCL2H-25-10	25	10.5	6.8	8.8	15	18	87
SCL2H-35-10	35	10.5	8.2	10.6	17	18	90
SCL2H-50-13	50	13	9.5	12.4	27.5	22.5	102
SCL2H-70-13	70	13	11.2	14.7	30	24	107
SCL2H-95-13	95	13	13.5	18	33	26	111
SCL2H-120-13	120	13	15	19.5	36	28	118
SCL2H-150-13	150	13	16.5	21	44	31	130
SCL2H-185-10	185	10.5	19	24	55	35	149
SCL2H-185-13	185	13	19	24	55	35	149
SCL2H-240-10	240	10.5	21	26	55	39	150
SCL2H-240-13	240	13	21	26	55	39	150
SCL2H-300-13	300	13	23.5	29.5	55	43	160



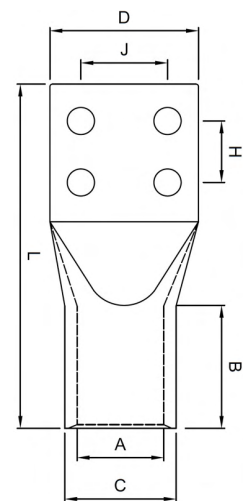
### Four Hole Compression Lugs

\*Blank Palm & other Hole sizes available on request.  
Material: Copper / Tinned Copper



**CODE**

	AREA (mm <sup>2</sup> )	E (mm)	A (mm)	C (mm)	B (mm)	D (mm)	J (mm)	H (mm)	L (mm)
SCL4H-240-08	240	8.5	21	28	45	58	35	25	110
SCL4H-240-10	240	10.5	21	28	45	58	35	25	110
SCL4H-300-08	300	8.5	23.5	31	50	58	35	25	115
SCL4H-300-10	300	10.5	23.5	31	50	58	35	25	115
SCL4H-400-08	400	8.5	27	36.5	52	58	35	25	120
SCL4H-400-10	400	10	27	36.5	52	58	35	25	120
SCL4H-500-08	500	8.5	30	39	56	58	35	25	124
SCL4H-500-10	500	10.5	30	39	56	58	35	25	124
SCL4H-630-08	630	8.5	34	44	66	65	35	25	145
SCL4H-630-10	630	10.5	34	44	66	65	35	25	145
SCL4H-800-08	800	8.5	35	45	63.8	58	35	25	148
SCL4H-800-10	800	10.5	35	45	63.8	58	35	25	148
SCL4H-1000-08	1000	8.5	43	56.2	78.5	90	35	25	250
SCL4H-1000-10	1000	10.6	43	56.2	78.5	90	35	25	250



### Compression Joints - Standard Barrel

Material: Copper / Tinned Copper

CODE	AREA (mm <sup>2</sup> )	C (mm)	A (mm)	L (mm)
SCCIC-0.75-02	0.75	2.8	1.3	20
SCCIC-1.5-03	1.5	3.3	1.8	25
SCCIC-2.5-04	2.5	4.2	2.3	25
SCCIC-04-05	4	5	3	25
SCCIC-06-06	6	6.5	3.5	25
SCCIC-10-7	10	7	4.5	30
SCCIC-16-08	16	8.5	5.5	35
SCCIC-25-10	25	10	7	40
SCCIC-35-12	35	12	8.5	45
SCCIC-50-14	50	14	10	50
SCCIC-70-16	70	17	12	55
SCCIC-95-18	95	18	13.5	60
SCCIC-120-19	120	19.5	15	50
SCCIC-120-19	120	19.5	15	65
SCCIC-150-21	150	21	16.5	55
SCCIC-150-21	150	21	16.5	70
SCCIC-185-24	185	24	19.0	60
SCCIC-185-24	185	24	19	75
SCCIC-225-24	225	24	20	65
SCCIC-240-26	240	26	21	65
SCCIC-240-26	240	26	21	85
SCCIC-300-29	300	29.5	23.5	75
SCCIC-300-29	300	29.5	23.5	85
SCCIC-300-29	300	29.5	23.5	100
SCCIC-400-34	400	34	27	90
SCCIC-400-34	400	34	27	100
SCCIC-400-34	400	34	27	120
SCCIC-500-38	500	36	30	95
SCCIC-500-39	500	39	30	100
SCCIC-500-39	500	39	30	130
SCCIC-625-41	625	41.5	35	105
SCCIC-630-45	630	45	35	110

